

# Over The Garden Wall

November, 2019

Patti Wolczuk, President 778-574-1188 Linda Martin, Secretary 604-541-6315 Lorna Bury, Treasurer 604-531-0216

## President's Message

### Fun Times

**Wow!** Don't miss the November meeting. It promises to be fun, busy and interesting. There is the last Parlour Show of the year; I particularly like to see the entries for the Fall cleanup vase, so creative. Floral arrangements for Remembrance and the dish gardens plus the photo contest are great attractions! Also, we have **three** member presentations: Fran Deptuck will be speaking about her experiences growing kiwis, Iris will be doing a Show'n'Tell and Mary O. will be telling us about dahlia care. Mary has a great giggly idea for Plants Plus, too.

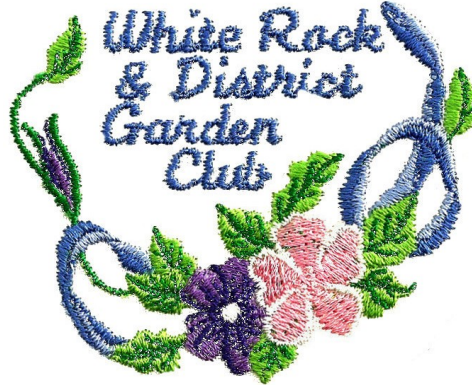
### More Fun Times

The Executive has been busy planning for next year and we will be bringing forward the budget for 2020 for your approval. There are many interesting adventures planned for next year from field trips to workshops. I rather envy the new 2020 Executive who will have a great time with all of you enjoying these activities. Come hear about the plans and offer your input - always welcome!

### And Even More

The new business cards are available. I would like a few volunteers to join me prior to the meeting (around 1:15pm) for a folding party at the front table for the new member brochures which are also ready (except not folded). Come have some fun....your reward will be a leftover Halloween candy and the satisfaction of being a helping hand! Looking forward to seeing all of you.

*Patti Wolczuk, President*



## BCCGC Fall Meeting

October 26, 2019

Bev Sass and myself had the opportunity to represent our club. We were able to share a table with Mary Openshaw (she is a dual member) with the North Surrey Garden Club. Two great speakers

were on the agenda:

### The Japanese Beetle in Vancouver by Dr. N Wong

- they like roses best
- one year life cycle (lay eggs in June)
- David Lam Park area has 96% contamination (2018)
- Temporary Transfer Station to bring contaminated waste
- treatment: Beetle Gone (hoping in 2020 to have a local product)
- **most important, at the first sign, report it.**

[www.bcinvasives.ca/JB](http://www.bcinvasives.ca/JB)

### Climate Change Impacts and Actions Gardeners Can Take by Dr. Richard Hebda

- record temp (July warmest in history)
- carbon dioxide rose 30% in 14 years
- arctic temp is 19°C warmer
- water has risen 5-7 m

### Gardens are Eco-systems

- hardiness zones are shifting
- water supply, disease, wind

## In This Issue

- **President's Msg**
- **BCCGC Report**
- **Christmas Cheer**
- **Letter From Reg**
- **Plants Plus**
- **Dahlia Tubers**
- **Words of Wisdom**
- **Next Meeting**

(weather)

### Garden for future

- keep natural, native plants, grow flowers and veg (beans)
- manage water
- reduce to efficient plants, pots and rain gardens, organic matter and mulch

Get yourself a cup of tea, coffee or....a glass of wine and watch a live presentation at the BC Iris Society. We have to take care of the earth.

<https://youtu.be/kuj1Y7H95ws>

### Winners

There was a competition for Best Place Setting and Best Table. **Guess what....our table won.**



Thank you Mary O for organizing it and Bev Sass for having great talent in designing a napkin holder.

Not to mention...our own **Bev Sass won First in Novice Class 1!** Congratulation Bev...we are proud of you!



Margrit Elmiger-Isert, Program

## Christmas Cheer

### Centerpieces

It's time to think of our Christmas project - donating centerpieces to Come Share for distribution in the community. Please bring them to our Christmas meeting. We totaled 151 last year, so let's try and top that. Please remember, **no fresh flowers or greenery, candles or candies.** The Dollar stores have stems and dry oasis so shop

early for a good assortment. We will have some display arrangements at the November meeting. Thanks for your help.

*Donna Lawson, Show Chair*

## Letter From Reg

### Beans

*(Reg was a former member who moved to Alberta. I still send him the newsletter via email).*

It's about time to catch up my news.



My surgery took place on 4th June, daughter, Amy, dropped me off at Rocky View Hospital in the morning and after two sleeps (restless nights I might add), she picked me up in the afternoon, plus my new left hip joint. After the 'Op I was banned from driving for six weeks. I passed my six week recovery test and set about regular exercises, I still use a cane when walking a distance. This surgery has given me a renewed zest for living.

A few words about my Alberta gardening experiences. I planted a variety of spring bulbs, fall 2018, it was a test that failed. I fully expected them to grow, worked in bone meal, but after a long spring wait all that came up was a few green tulip stems, no flowers. I marked the planting locations. I have never failed before with Daffodils or any other bulbs. Very suspicious? By that time I abandoned gardening to deal with my Op'.

The 24th May came and went then perusing a local garden centre I found one lonely packet of Scarlet Runner Beans and decided to see if they were viable. A previous owner here had left planter boxes along the outside of the deck (the deck is at the second level so the



boxes were at ground level). I began with ten climbing poles inserted in the soil and strung them together for security. I pre-soaked the beans and they promising swelled and I pushed them into the prepared bed. I

walked away, saying to myself, will they or won't they, well they did and before long they climbed skyward.

After loving care and attention production began leading up to three days ago, in the meantime I lost track of many dinner plates I filled with beans and gravy and other veggies. I have found that not many people know how to prepare and cook runner beans, done right they are delicious.



My last picking was three days ago and I managed to pick enough beans for three dinners. By then our first severe frost and snow ended my bean growing efforts, but look out next year.

I hope you are well and happy and Best Wishes to the Garden Club.  
By for Now

*Reg Sutton, Former Member*

## Plants Plus

### Six Weeks 'til Christmas

Time to decorate.

- Think porch pots and wreaths.
- Donate gently used decorations.
- Donate greenery bundles.

**Regifting:** this is a good time to donate those gifts you opened and never used. They will be perfect for someone we know. Donate divided houseplants. They make nice gifts for friends.

*Mary Openshaw, Plants Plus*

## Storing Dahlia Tubers

### Digging

Wait until there is a killing frost. The foliage will turn black. (Tubers dug too early will not keep as well. The frost sweetens the tuber with sugars for winter storage. (if there is no frost you should dig by mid November before the rain sets in).

After the killing frost, wait 2 weeks to dig. If you plan to divide in the fall: 4 days before digging, cut the stalks back to 6". (This will help you locate the eyes if you are dividing before storing). Make sure your labels stay with the clumps. Using a fork, start to dig 12" away from the stake, dig all around the plant, lifting carefully to avoid breaking necks. Wash carefully (spray attachment) and allow to air dry approx. 24 hours. (Never dry clumps on concrete flooring, they will shrivel).

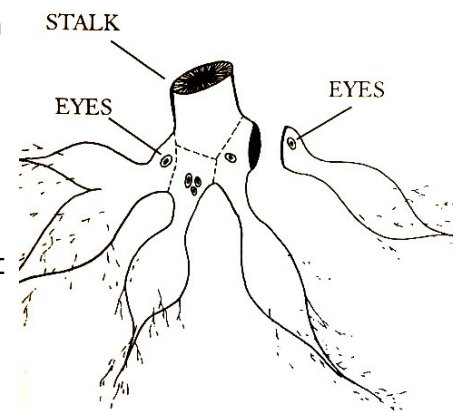
### Dividing

Dividing can be done in fall or spring. An eye will appear at the crown of the tuber. (a little nub). Not all tubers will produce eyes nor grow. Cut off tubers ensuring to include an eye. Keep only the best, discard small stringy ones. Do only one variety at a time to avoid mixing up. When the tubers are dry you can write the variety name on them with a Sharpie Permanent Marker or attach a label. The first step in dividing the tuber clump is to remove the old tuber (It will be the dark brown ugly one). Also cut the stem off at the junction of the crown. Remove the stem if storing full clumps as moisture in this 'handle' of the stem may be a prime source of rot. Then cut off all tubers with weak or broken necks. All hair roots should also be removed.

Use a sharp pair of pruners. Some clumps produce tougher tubers than others. You may need to use a very strong stainless steel bladed knife. (Don't use a paring knife or a utility knife). If you do not see an eye because the tubers are too impacted, store them

in smaller clumps and wait until spring; a sprout may appear from deep within the tubers.

### TUBER DIVISION



### Storing Tubers For Winter

After tubers have dried, they are ready to store. Any cut ends should be dipped in garden sulphur powder. This helps stop rot

during storage.

Store in wood shavings in cardboard boxes in a cool area like an insulated shed or garage at a temperature below 50°F. Do not let freeze. Tubers can be stored in clumps for dividing in the spring. They are a bit tougher to cut apart than but will be more protected from drying out and shrivelling.

Tubers can be stored in crumpled newspaper, or vermiculite, or wood shavings. Include the labels with each clump. Check the tubers once a month to notice any rot (fuzzy mildew) and discard those tubers. Some people check at Christmas, Valentines' Day and Easter.

*Mary Openshaw, Plants Plus*

## Marketplace

### Advertisements

Club Members can place an ad in our newsletter or send an email ad between newsletters to our members for only \$5. Non members can also place ads or email ads for \$10. Non members must be vouched for by a club member. Any sales are private between the seller and the buyer since our constitution does not allow sales for private profit at our meetings. All ad fees go to the club.

*John Davidson, Newsletter*

## Words Of Wisdom

### Gardening

*Submitted by Yvonne Pont, Member*  
Gardening is the art that uses flowers and plants as paint, and the soil and sky as canvas.

*Elizabeth Murray*

Over-fertilized plants may be beautiful, but are otherwise useless, like people whose energies are devoted so completely to their appearance that there is no other development.

*William Longgood*

My green thumb came only as a result of the mistakes I made while learning to see things from the plant's point of view.

*H. Fredale*

### Last But Not Least

*Submitted by John Davidson, Newsletter*  
I just realized that I haven't done the "Hokey Pokey" in over 10 years. I guess when you get older, you just forget what it's all about.

You know you're old when you wake up with that awful "morning after" feeling and you didn't do anything the night before!

## Next Meeting

### November 12<sup>th</sup>, at 2pm

Doors Open at 1pm  
Cranley Place Hall, 2141 Cranley Drive,  
Surrey.

Feel free to bring home made goodies to spice up our tea/coffee break. Remember to bring your own cup to save money and the environment.



## Hexagon Honey



|   |                  |
|---|------------------|
|  | 250g \$13 (½ lb) |
|  | 350g \$16 (¾ lb) |
|  | 500g \$20 (1lb)  |
|  | 1kg \$35 (2lbs)  |

Also available in pails: 3kg, 5kg and 10kg. Pails have a 10% discount.

This honey is straight from the comb to the jar. No filtering or pasteurizing. If you would like to order honey, please send me an email or text.

Kevin Thompson  
[hexagonhoney@telus.net](mailto:hexagonhoney@telus.net)  
phone 604-218-5704